



Swimming Pool Site Survey Inspection  
13650 Fiddlesticks Blvd. Suite 202  
PMB 103  
Fort Myers, FL 33912  
239-216-0600  
Jon@liquidconceptsfl.com  
Date: 8/30/2021  
Inspector: Jonathan Kaplan

Location/Address: 1527 Mockingbird Drive in Naples, FL.

Pool Type: Concrete shell plaster finish and ceramic tiles.

Control: Jandy limited on/off and wifi connectivity.

Pump: Jandy Flo Pro Series variable speed pump.

Filter: Jandy CS 200 cartridge filter.

Chlorinator: Pentair I-Chlor salt chlorine generator.

Valves: 2" ball valves, and 2" 3-way water diverter valves.

Heat: Aqua Therm electric heat pump.

Light: (3) Jandy Mini Brite white pool light fixtures. With remote.

Air Blower: N/A.

Automatic Cleaner: N/A..

Auto water fill: None observed.

Miscellaneous: N/A.



### Additional Comments:

1. The main circulatory pump works without any leaks present.
2. The pool filter works properly with no leaks present. Change the inner element yearly for proper maintenance.
3. The plastered surface is in good condition. The tiles are in good condition.
4. The lights all work properly with no leaks present. They are controlled through the use of a remote.
5. The salt chlorine generator works properly with no leaks present.
6. The controller connected to the pump works properly. A full pool/spa automation system may be added if desired.
7. The valves all turn without leaks present.
8. The heat pump works properly with no leaks present. There was a very small amount of water under this unit. It is undetermined if this water is a slight, slight leak internally or if it was just a wet area from irrigation. If this condition worsens it can be remedied with a service call.
9. All equipment is properly grounded.
10. The overflow pipe is properly installed.
11. There is no spa therapy jet blower motor installed. Would recommend seeking disclosure from the seller if there ever was one installed and the status of that condition.
12. The screws in this drain do not seem to be stainless and are rusting. Eventually it will unlock the drain and it could become a suction hazard. Simply have this hardware with stainless steel.



## Disclaimers

- To know for sure about pool leaks, you want to hire a leak detection company to dive the pool and certify it from every perspective in and outside the pool. The pool cannot be certified 100% without leak (s) without this service being performed.
- The information provided in this report is a snapshot in time on the day an inspection is performed. The report will depict where possible if equipment is broken, malfunctioning, or dated. However, this is a representation of what was witnessed that day and may not be what is reflective on a subsequent date. If a pump, filter, light, or heat-pump are working with no leaks today, it is possible that they may not work, malfunction, or develop a leak tomorrow.
- Wherever the age of the equipment is represented, it shall be understood that this is an approximate assessment based on industry knowledge.
- Speculative comments are made based on industry experience. Without original permits or plans, it would be inconclusive to make comments factual without getting disclosure from the seller or performing other due diligence.
- The scope of this inspection does not include any statements based on structural integrity which would require the services of an engineer or swimming pool building contractor.
- The scope of this report will include information on equipment and any other findings above the surface, but will not include any statements of fact pertaining to underground level conditions.

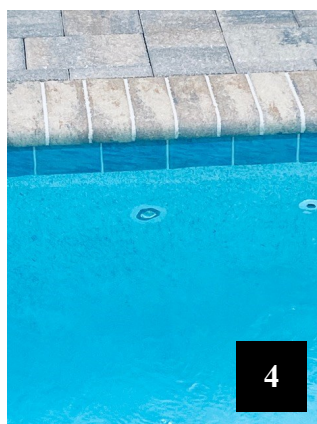
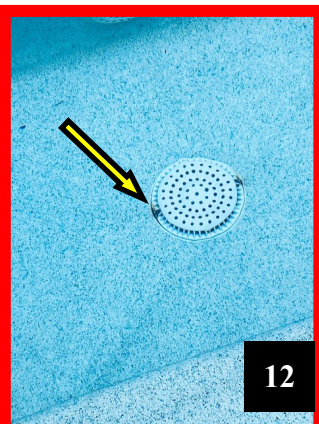
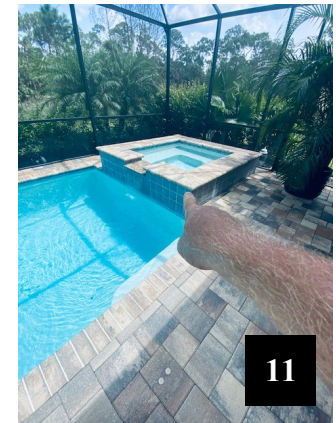
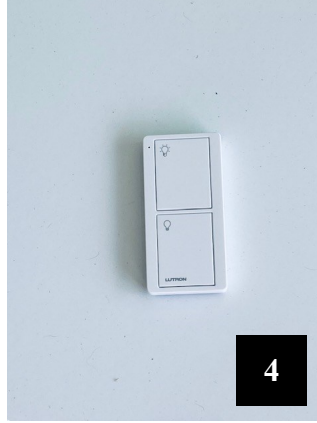
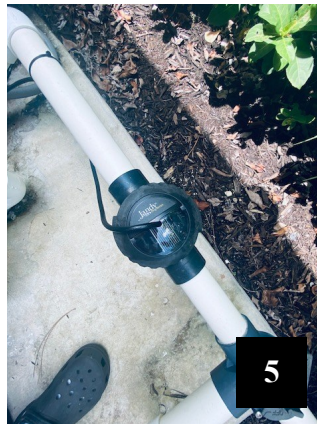
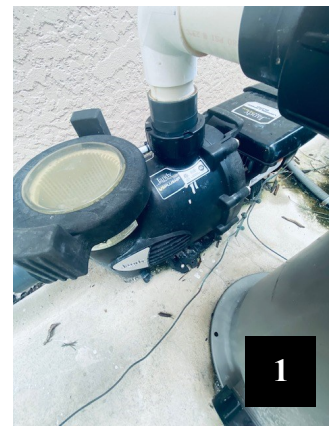
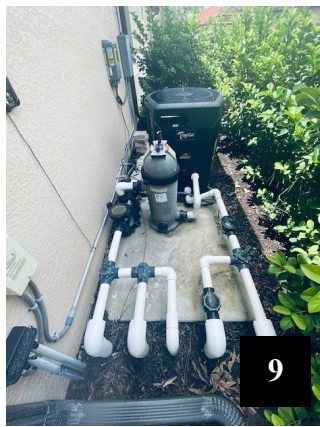
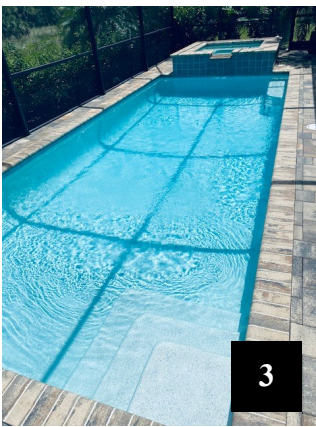
## FAQS and Optional Upgrades Available

- *A new pump installed will typically range from \$700 to \$1500 for 1-speed or variable speed.*
- *A new filter installed will typically range from \$600 to \$900.*
- *A new heat pump or gas heater typically will cost between \$4,000 and \$4,500.*
- *A pool/spa automation system typically will range from \$1,800 to \$2,500. A pool only automation typically costs about \$1000.*
- *A new spa side remote for automation will cost about \$650 to replace.*
- *A new standard pool or spa light will typically cost about \$600. LED or color are more. A light transformer will cost about \$250.*
- *A new therapy jet blower motor will typically cost about \$550.*
- *A chlorine tablet dispenser will cost about \$300 installed.*
- *A salt chlorine generator costs between \$1,500 and \$2,000.*
- *A check valve costs about \$175 installed.*
- *An actuator for automation costs about \$225 each installed.*
- *A leak detection service will cost about \$350 depending on the complexities of the pool package.*

*If you have any questions pertaining to this report or if you desire assistance with any of these options please call our office for more information. 239.216.0600*

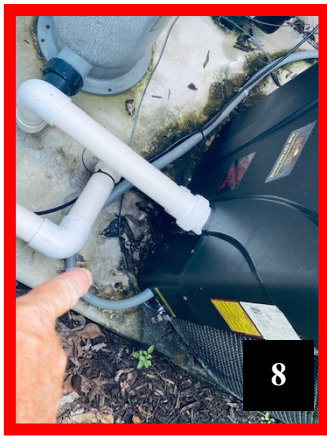






Numbers on pictures have a corresponding comment on the previous page.





Numbers on pictures have a corresponding comment on the previous page.

